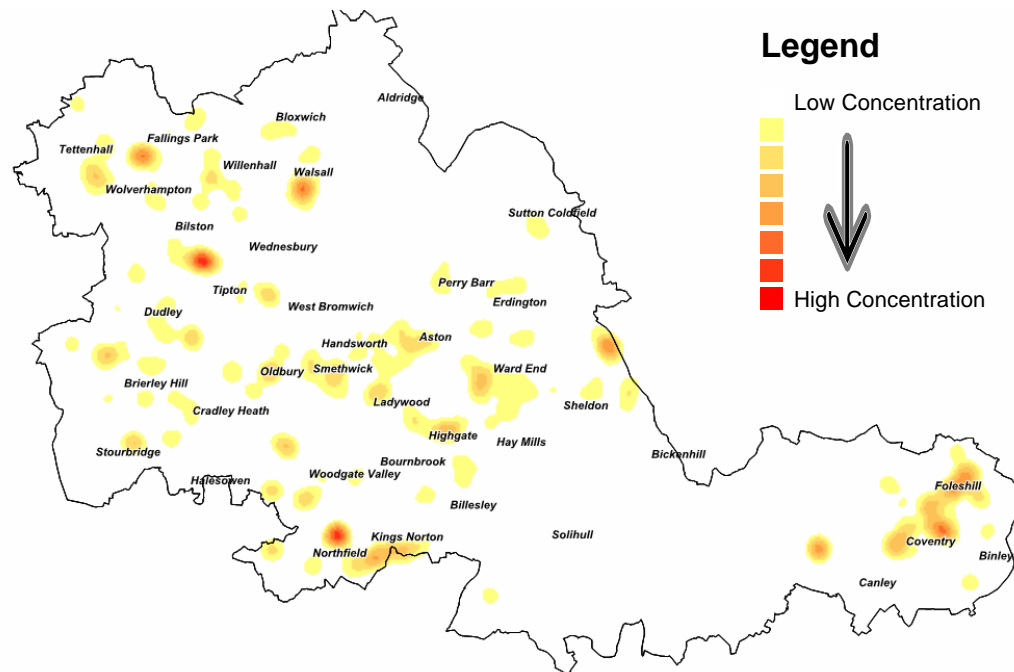




Map 1 shows us that the highest concentrations of arson dwelling fires during 2010/2011 occurred in Foleshill area of Coventry and the Halesowen area of Dudley.

Due to the high life risk in the areas mentioned above Foleshill has 2 wholetime fire engines (24 hours a day). Halesowen has 1 wholetime fire engine but is regularly supported by Cradley Heath's fire engine which is on the other side of this hotspot. As a direct result of this analysis further work has been done to investigate the cause of this concentration and it has been discovered that the concentration was due to a high number of Arson Dwelling fires in a specific housing estate. This housing estate is known to WMFS and various prevention work has been carried out which has since led to a reduction in the number of incidents.

We can then compare this to the last financial year's data (2009/2010) to identify any similarities or differences to the geographical location of arson dwelling fires (Map 2).



Map 2 is a replica of map 1 but illustrates the last financial year's worth of incident data (2009/2010). Again the red areas depict where the highest concentrations of incidents occur.

Both map 1 and 2 reveal similar patterns however the red/orange areas on map 2 are more significant in the Northfield, Tipton, Walsall and Coventry areas in 2009/10 as apposed to the Foleshill and Halesowen area in 2010/2011.

Northfield, Walsall and Foleshill Fire Stations have 2 wholetime fire engines. Tipton has 1 wholetime fire engine and 1 fire engine staffed between the hours of 10am and 10pm.