

# The Trend: Secondary Fires that Attract a 20 Minute Attendance Time

Total Secondary Fires That Attract a 20 Minute Attendance Time 2008/9 - 2010/11

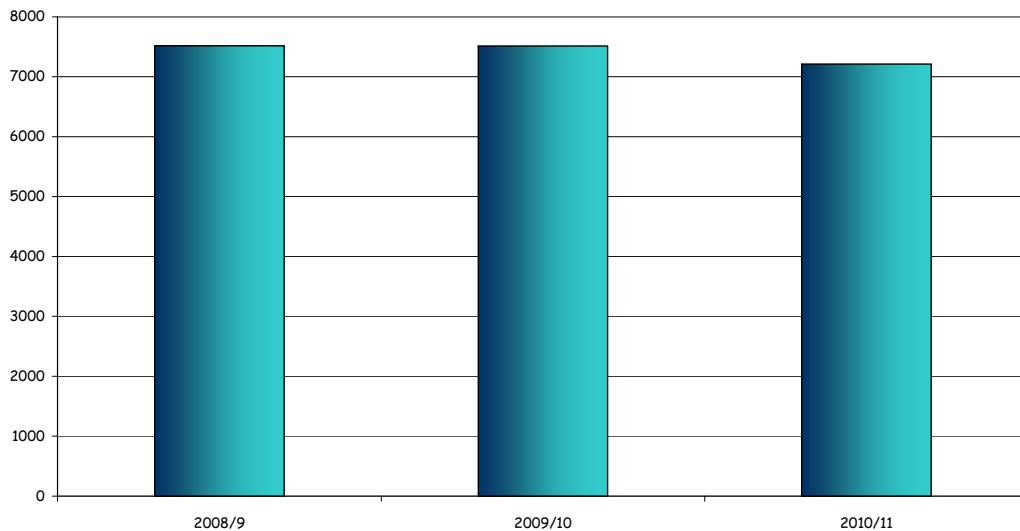


Figure 1: Number of Secondary Fires that Attract a 20 Minute Attendance Time Reported to and Recorded by WMFS (Including Over The Border Calls) 2008/9 - 2010/11

Breakdown of Secondary Fires That Attract a 20 Minute Attendance Time by Incident Type 2010/11

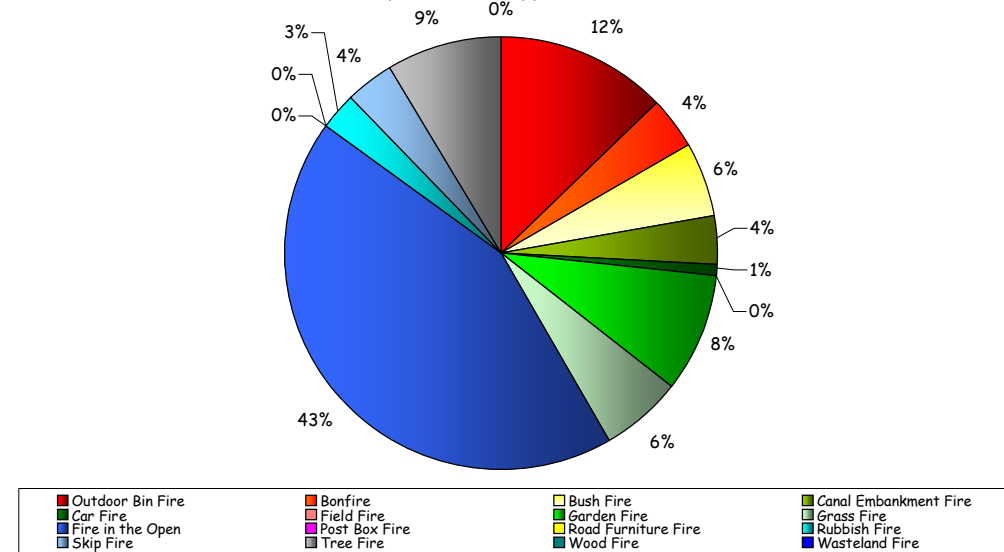


Figure 2: Total Secondary Fires that Attract a 20 Minute Attendance Time Reported to and Recorded by WMFS (Including Over The Border Calls) 2010/11 Breakdown by Risk Category

- Secondary fires that attract a 20 minute attendance time are low risk incidents that cause little or no risk, such as grass fires where an immediate response is not critical to safety.
- Secondary fires that attract a 20 minute attendance time have accounted for approximately 19% of total incidents and this has remained stable over the period analysed. By the end of 2010/11, total incidents of this nature had undergone -4% reduction when compared to financial year 2008/9, the majority of which was experienced in 2010/11.
- Due to the generic nature of the incident types included in this category (e.g. fire in the open) and the way that they can be allocated interchangeably, analysis and commentary relating to the changing composition of this risk category has not been included due to the inability to identify any meaningful trends.
- Even though these incidents are reducing, as with secondary fires counted within the low risk category, incidents of this nature have the potential to indirectly impact on WMFS response to high risk incidents.

<sup>1</sup> Specialist vehicles that are mobilised to secondary incidents that attract a 20 minute attendance time only.

Secondary Fires That Attract a 20 Minute Attendance Time 1st April 2008 - 31st March 2011 Temporal Analysis: Month

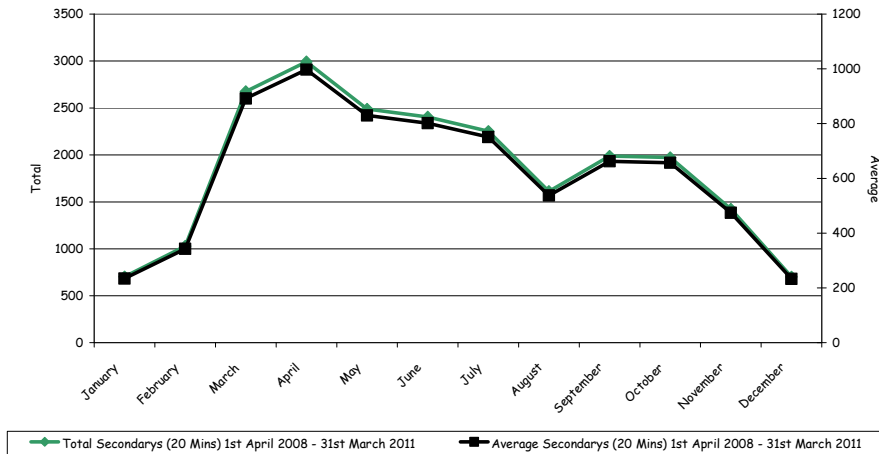


Figure 3: Total Secondary Fires that Attract a 20 Minute Attendance Time Reported to and Recorded by WMFS (Including Over The Border Calls) 2008/9 - 2010/11 Temporal Analysis by Month

Secondary Fires That Attract a 20 Minute Attendance Time 1st April 2008 - 31st March 2011 Temporal Analysis: Day

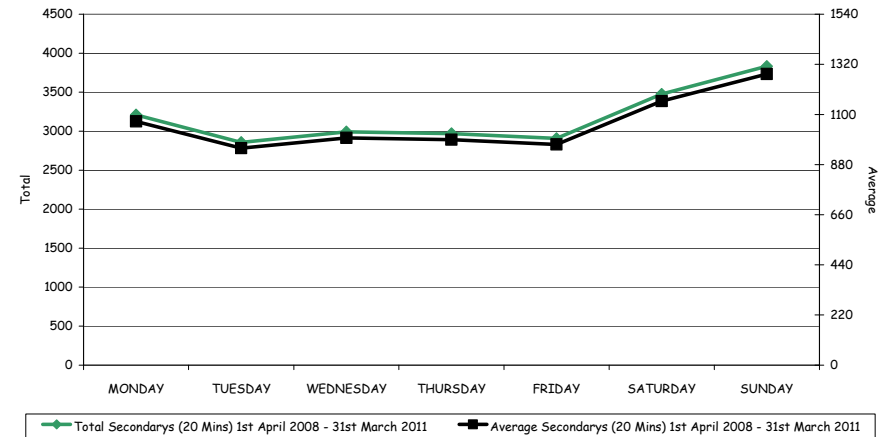


Figure 4: Total Secondary Fires that Attract a 20 Minute Attendance Time Reported to and Recorded by WMFS (Including Over The Border Calls) 2008/9 - 2010/11 Temporal Analysis by Day

➤ Secondary fires attracting a 20 minute attendance time rise sharply from February reaching their highest levels historically in April. From this point levels decline until August, rising again between September - October. Levels remain largely consistent throughout the week experiencing a slight rise over weekend periods. Incidents of this nature rise steadily from 07.00hrs, reaching their highest point between 19.00 - 20.00hrs from which point they sharply decline.

Secondary Fires That Attract a 20 Minute Attendance Time 1st April 2008 - 31st March 2011 Temporal Analysis: Hour

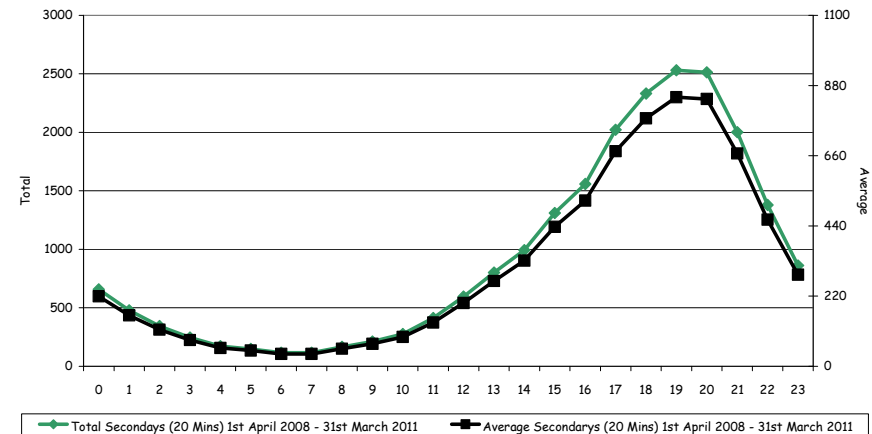
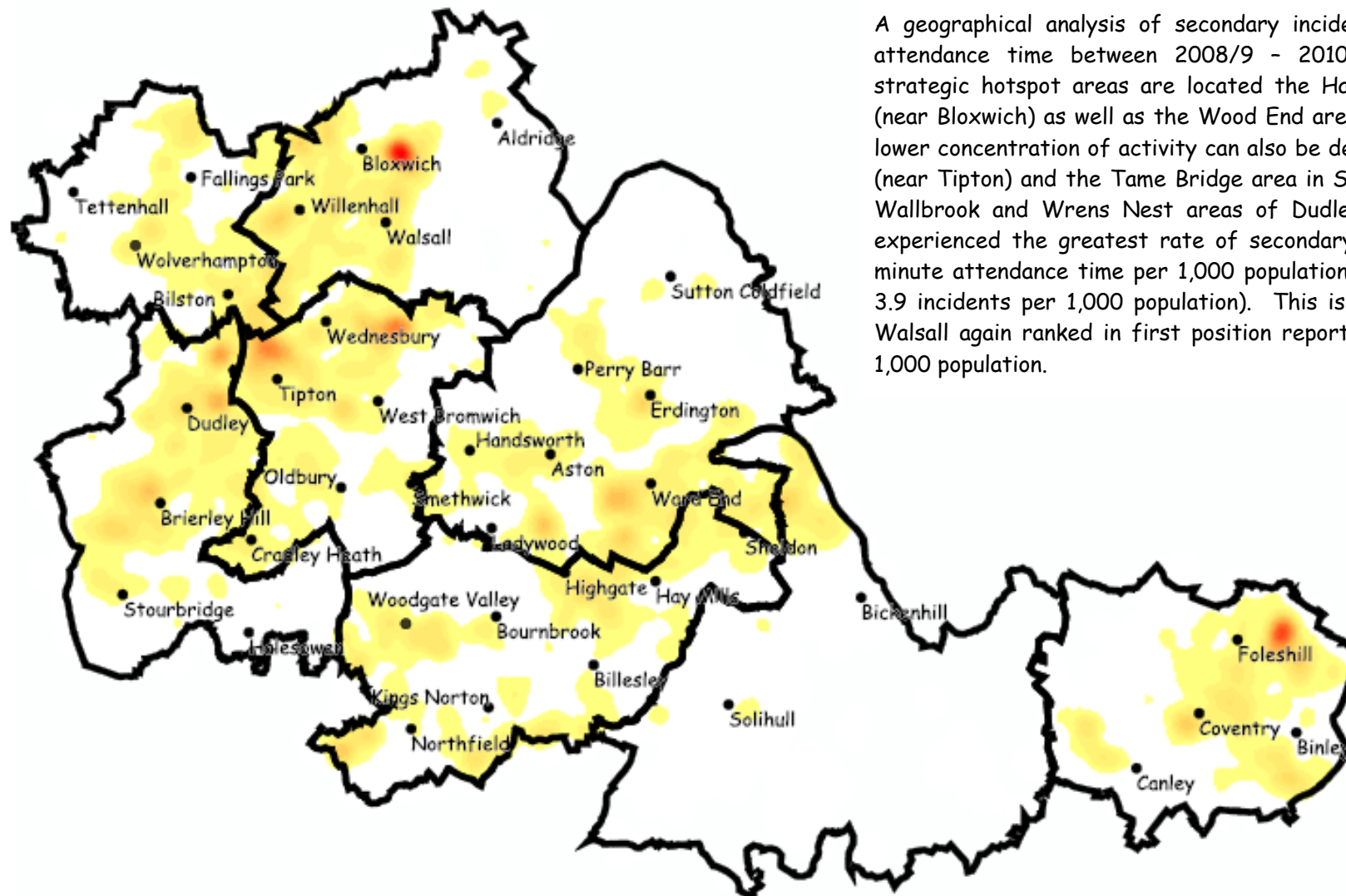


Figure 5: Total Secondary Fires that Attract a 20 Minute Attendance Time Reported to and Recorded by WMFS (Excluding Over The Border Calls) 2008/9 - 2010/11 Temporal Analysis by Hour

## Strategic Hotspot Areas 2008/9 - 2010/11: Secondary Fires That Attract a 20 Minute Attendance Time



A geographical analysis of secondary incidents that attract a 20 minute attendance time between 2008/9 - 2010/11 indicates that the prime strategic hotspot areas are located the Harden area of Walsall command (near Bloxwich) as well as the Wood End area of Coventry. A comparatively lower concentration of activity can also be detected in the Summer Hill area (near Tipton) and the Tame Bridge area in Sandwell command as well as the Wallbrook and Wrens Nest areas of Dudley command. Walsall command experienced the greatest rate of secondary incidents attracting a twenty minute attendance time per 1,000 population in 2010/11 reporting a rate of 3.9 incidents per 1,000 population). This is consistent with 2008/9 where Walsall again ranked in first position reporting a rate of 4.0 incidents per 1,000 population.