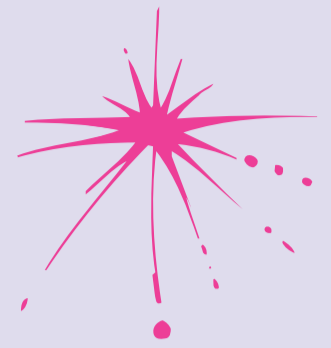
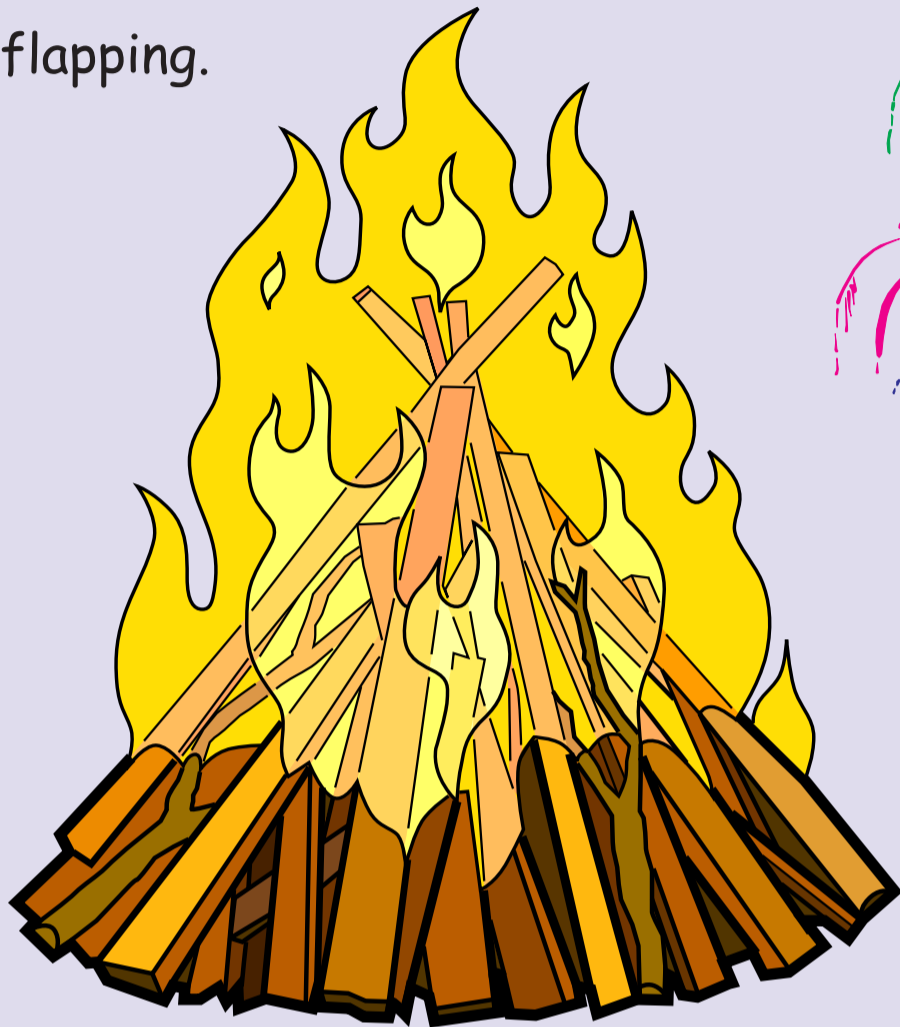


Bonfire Safety

Try to go to an organised, public bonfire, and remember:-

- **DON'T** stand too near a bonfire.
- Wear clothes that are done up and do not have bits loose and flapping.



Dress safe
and warm

Stay at a safe distance.

If you do decide to have your own bonfire, remind the adults to use the safety tips below:

- **DON'T** put anything on the bonfire that give off dangerous gases, e.g tyres, aerosols.
- Have someone looking after the bonfire at all times and have a hosepipe nearby.
- **DON'T** have the bonfire near buildings, trees or anything that could catch fire.
- If it is too windy do not light the bonfire as it may be difficult to control.
- **DON'T** use paraffin or petrol to start the fire as they may explode.
- If the fire gets out of control call 999 and ask for the Fire Service.

WEST MIDLANDS FIRE SERVICE

